

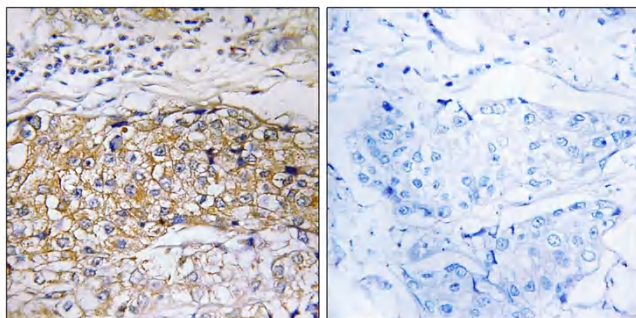


USP24 Polyclonal Antibody

Catalog No	YP-Ab-02831
Isotype	IgG
Reactivity	Human;Mouse
Applications	IHC;IF;ELISA
Gene Name	USP24
Protein Name	Ubiquitin carboxyl-terminal hydrolase 24
Immunogen	The antiserum was produced against synthesized peptide derived from human USP24. AA range:21-70
Specificity	USP24 Polyclonal Antibody detects endogenous levels of USP24 protein.
Formulation	Liquid in PBS containing 50% glycerol, 0.5% BSA and 0.02% sodium azide.
Source	Polyclonal, Rabbit,IgG
Purification	The antibody was affinity-purified from rabbit antiserum by affinity-chromatography using epitope-specific immunogen.
Dilution	IHC: 1/100 - 1/300. ELISA: 1/10000.. IF 1:50-200
Concentration	1 mg/ml
Purity	≥90%
Storage Stability	-20°C/1 year
Synonyms	USP24; KIAA1057; Ubiquitin carboxyl-terminal hydrolase 24; Deubiquitinating enzyme 24; Ubiquitin thioesterase 24; Ubiquitin-specific-processing protease 24
Observed Band	
Cell Pathway	cytoplasm,
Tissue Specificity	Brain,Epithelium,Placenta,Platelet,T-cell,
Function	catalytic activity:Ubiquitin C-terminal thioester + H(2)O = ubiquitin + a thiol.,function:Involved in the ubiquitin-dependent proteolytic pathway in conjunction with the 26S proteasome.,PTM:Phosphorylated upon DNA damage, probably by ATM or ATR.,similarity:Belongs to the peptidase C19 family.,similarity:Contains 1 UBA domain.,
Background	Modification of cellular proteins by ubiquitin is an essential regulatory mechanism controlled by the coordinated action of multiple ubiquitin-conjugating and deubiquitinating enzymes. USP24 belongs to a large family of cysteine proteases that function as deubiquitinating enzymes (Quesada et al., 2004 [PubMed 14715245]).[supplied by OMIM, Mar 2008],
matters needing attention	Avoid repeated freezing and thawing!

**Usage suggestions**

This product can be used in immunological reaction related experiments. For more information, please consult technical personnel.

Products Images

Immunohistochemistry analysis of paraffin-embedded human breast carcinoma tissue, using USP24 Antibody. The picture on the right is blocked with the synthesized peptide.